

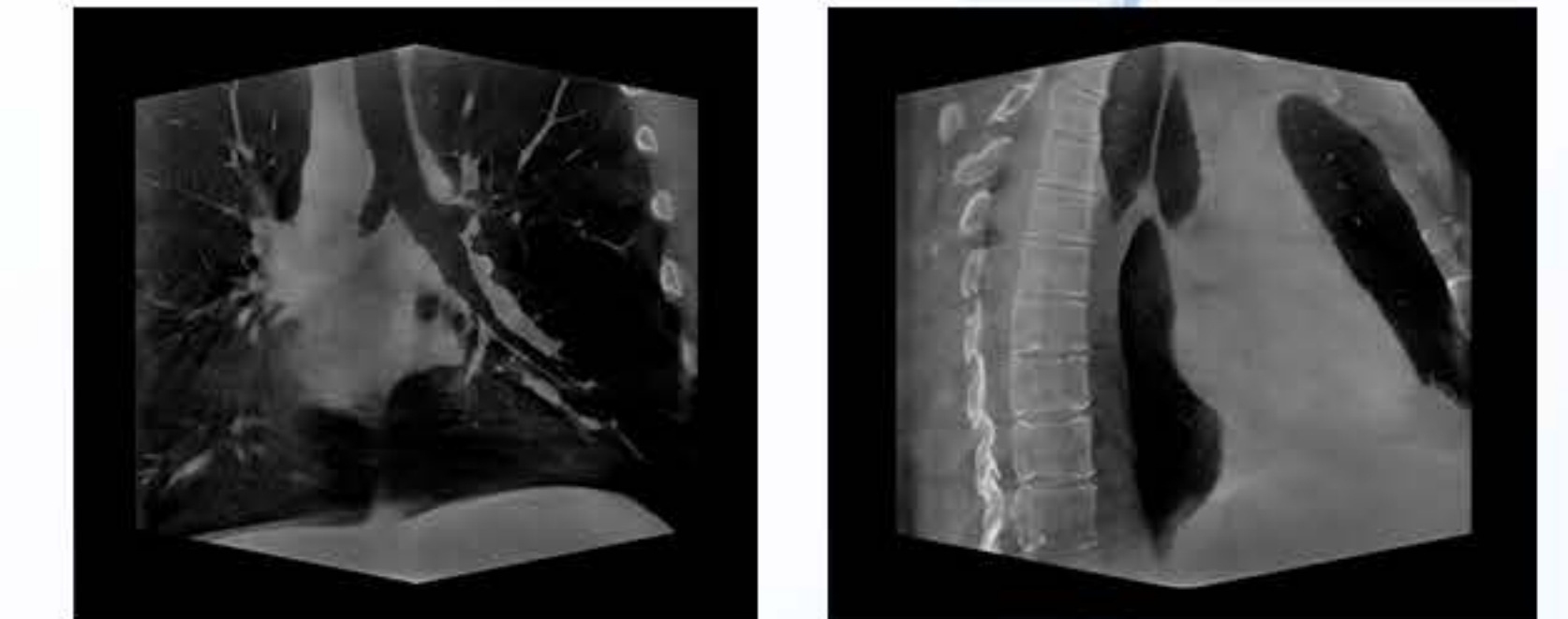
# CLARIS XT

THE NEW STANDARD OF CARE  
IN MEDICAL IMAGING

## IMAGE

### CLARIS XT | TOMOGRAPHY

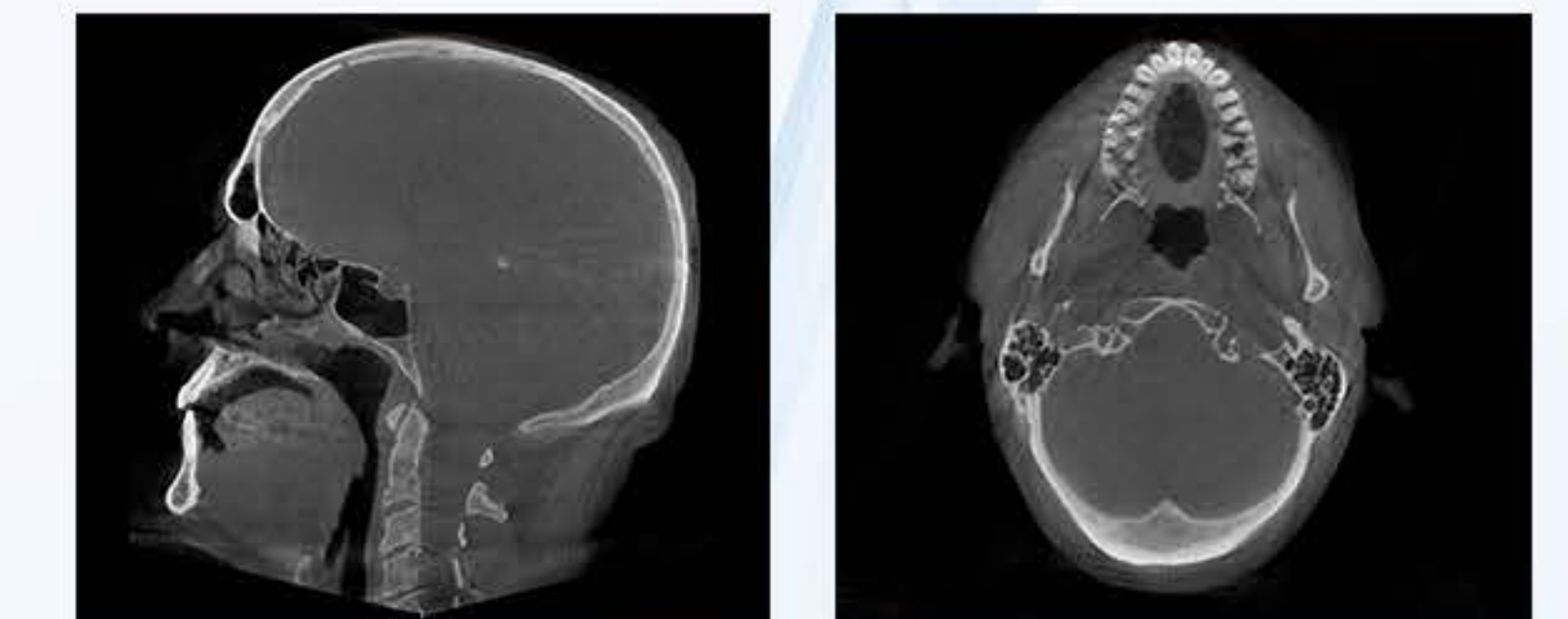
Clariss XT with Cesium Sensor detector technology, allowing for a large field-of-view, full chest X-Ray image with superior image quality. The Clariss XT is capable of replacing your entire X-Ray room in a smaller, more efficient form factor.



## CAPTURE

### XC ICE-4 | ACQUISITION

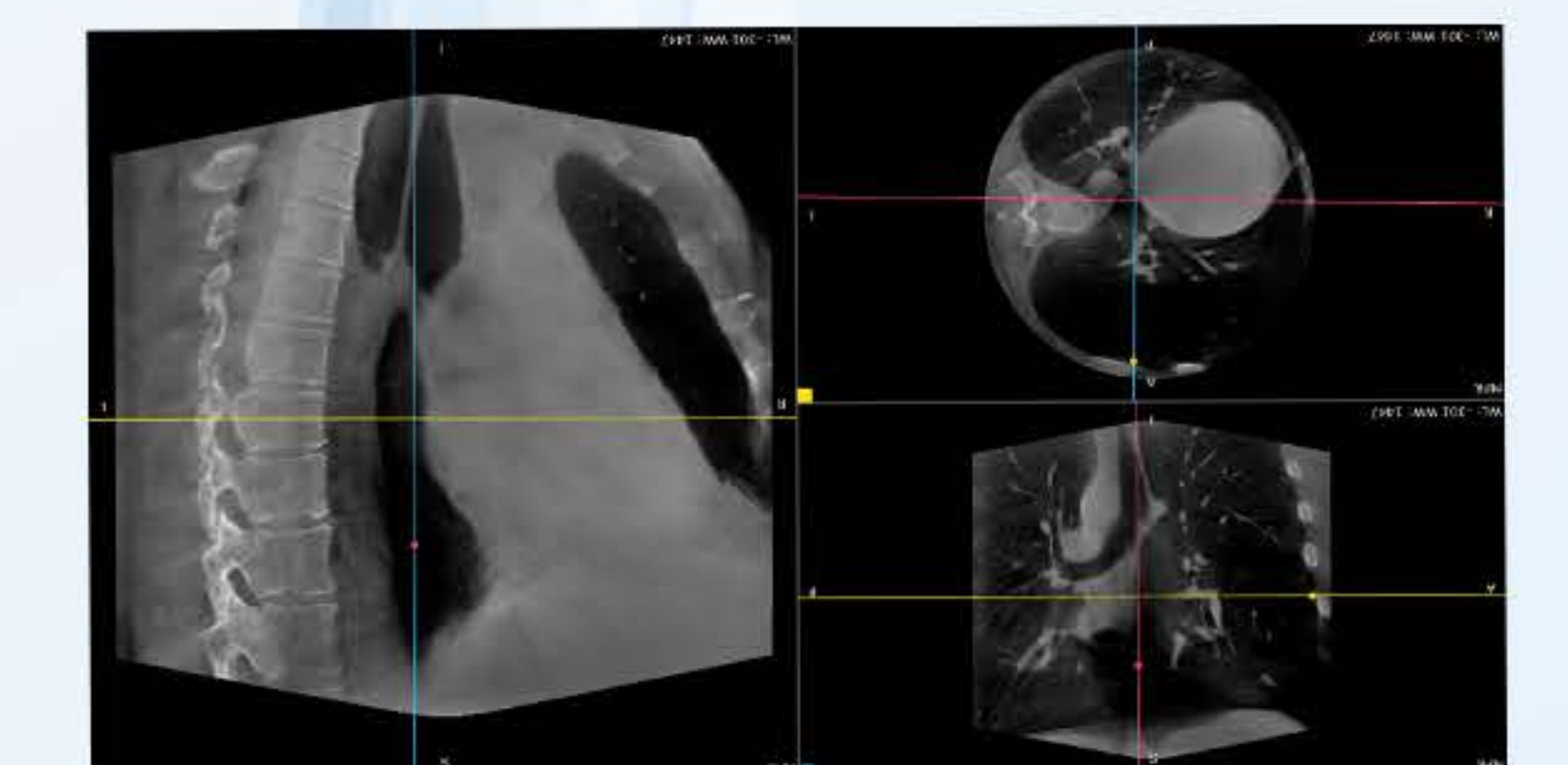
XC touchscreen acquisition with ICE-4 Enhancement Processing provides all-new features including "Image Display State" to ensure balanced presentation of both soft tissue, overlapping bone structures, and automatic analysis of image characteristics to optimize processing.



## REVIEW

### CLARITY PACS | ARCHIVE

Our fully web-enabled and integrated PACS solutions help transition your practice into a safe, secure, and filmless environment. Clarity PACS™ supports all your current and future imaging needs.



Lower Dose Imaging Solution | Cesium Sensor | XC Acquisition & Reconstruction



140 Micron

430 x 430 mm Sensor

16 Bit Flat Panel

The **Clariss XT** CBCT captures diagnostic studies with ultra large 17" by 17" detectors while providing the functionality of a traditional x-ray room. With its cesium sensor technology, studies for abdominal, chest, cranial, dental, and orthopedic applications are available through one streamlined workflow. The **Clariss XT** captures high detailed chest information as well as studies expected from a traditional x-ray room.

The **Clariss XT's** low dose tomosynthesis modality provides low dose studies and high patient throughput. The **Clariss XT** simplifies workflow minimizing cost and shorter treatment time. The result for the **Clariss XT** is a streamlined, all-in-one cone beam CT machine that addresses emergency care, surgical planning and general imaging needs.

# CLARIS XT SPECIFICATIONS

Total Weight	800 lbs (with patient bed)	
Dimensions	Width	62"
	Depth (Max)	117" (with patient bed)
	Height	63"
	Bore	28" or 31"
Scan Time Tomosynthesis	22 sec / 45 sec 180 images / 360 images	
Image Detector	17 x 17" amorphous SiTFT w/ CSL TL 140 µm pixel pitch	
Possible Image Resolutions	3072 x 3072 1536 x 1536	X-ray 140 µm
Grey Scale	16 bit (65,536 gray levels)	
Voxel Size	≥ 85 µm	
Patient Position	Supine	

Reconstruction	< 15-45 sec	
Software	XC 2.0 acquisition workstation with export capabilities to PACS and multiple viewing softwares. DICOM compatible.	
Power Required	115 or 230 V single phase power 50 / 60 Hz No special hookup required	
Acquisition Technique	Single X-Ray images multiple exposures. Sparse sample methods used to reduce patient dose.	
X-Ray Source	High frequency, constant potential (DC), rotating anode Tube Power: 5 kW (e.g. 120 kV, 50 mA) Max. Tube Voltage: 120 kV Max. Tube Current: 100 mA Focal Spot Size: 300 µm / 600 µm Max. Exposure Time 100 ms	

# CT SCANNER

Power, Dimensions, Weight, Bore Diameter	
Input Power	115/230 VAC (single phase), 6 kVA
Dimensions	60 x 116 x 60" (WxDxH)
Weight	500 lb Gantry
Bore Diameter	28"
Table Dimensions	26 x 84" (WxL)
Weight Capacity	< 350 lb
Table Movement	Motorized Height Adjustable

X-Ray Generation	
Beam Shape	Cone
X-Ray Tube Voltage	120 kV (Max.)
X-Ray Tube Current	100 mA (Max.)
X-Ray Tube	High Freq, 5 kW

X-Ray Detection	
Detector Type	aSi TFT, w/ CsI:TI scintillator
Greyscale	16 Bit (65,536 grey levels)

# WORKSTATION

Acquisition Workstation	
Input Power	120 or 220 VAC (single phase)
DICOM Connectivity	
Supported SOP's	DX, CT
Supported IOD's	Store Print, MWL, MPPS, GSPS, GSDF, Media Maker, SC
Software Interface	
Clarity S/W	XC Acquisition, Viewer, Archive, Media Burning, Query and Retrieve
Processing Tools	MRP, MIP, Measurements, Slice Slab, Volume Rendering

# OUTER DIMENSIONS



CT Image Mode	
Reconstruction	15 sec
Acquisition Speed	< 22/45 sec / study; 360 images
Voxel Size	85 µm
FOV	43 x 43 cm

DR Mode	
Resolution	40 85 µm
Acquisition Speed	< 1 min / study
Voxel Size	85 µm

FL Mode	
Reconstruction	< 3 min
Acquisition Speed	< 1 min / study

© 2020 iCRco. All rights reserved. "True Flat Scan Path" and "XC" are registered trademarks of iCRco | BR 102816AUS | Design & Specifications are subject to change without notice.